

TASARIM^{No} 267

MİMARLIK ve
MALZEME
ARCHITECTURE &
MATERIAL

REVIEW OF
ARCHITECTURE
INTERIOR
VISUAL ARTS

PORTS

1961

TR, 15 TL
KATILIM, 20 TL
ON İZİM, 15
EU, 415
US, 519

212192-2016/10

12

ISSN 1300-7351

9 771 300 735008

Rwinkwavu House

Tasarım, alanda bulunan sıcak ve kuru bir yamaçta, sıkı bütçe gereksinimlerine ve "köy içinde bir köy" yaratarak personel ve toplum arasındaki bağlantıları geliştirme isteğine yanıt veriyor. Tüm inşaat malzemeleri, çoğu komşu bölgelerden gelerek Ruanda içinden elde edilmiş. Mahalle kadın kooperatifi, duvar yapımı için el yapımı tuğlaları yapmakla görevlendirilmiş. Havalandırmalı tavan boşluğu, termal ve akustik performans amacıyla kil çinileri ile kaplanmış. İşgücünün yaklaşık% 90'ı yoksul ve kırsal köy olan Rwinkwavu'ya ait ve kadınlar inşaat boyunca personelin en az üçte birini oluşturmuş.



- The design responds to its site on a hot, dry hillside, tight budget requirements and a desire to enhance connections between staff and community by creating 'a village within a village'. All construction materials were sourced from within Rwanda, with most coming from the neighboring areas. Local stone was quarried for all foundations and walkways. A neighborhood women's cooperative was employed to make all the handmade bricks for wall construction. A ventilated roof cavity is clad with clay tiles for thermal and acoustic performance. Approximately, 90% of the labor was local to the poor and rural village of Rwinkwavu, and women represented a minimum of one third of the staff throughout construction.





Mimari Tasarım/ İnşa Design/Build:
SHARON DAVIS DESIGN / RWANDA
VILLAGE ENTERPRISE (RVE)

Sharon Davis Tasarım Ekibi Design
Team:
Tasarım ve Proje Yönetimi Lead
Designer and Project Manager:
BRUCE ENGEL

Tasarım Ekibi Design Team:
SAMUEL KELLER, YVES
TWIZEYIMANA, EMMANUEL
HAYUGIMANA, KENNETH NKUSI,
AZIZ FARID

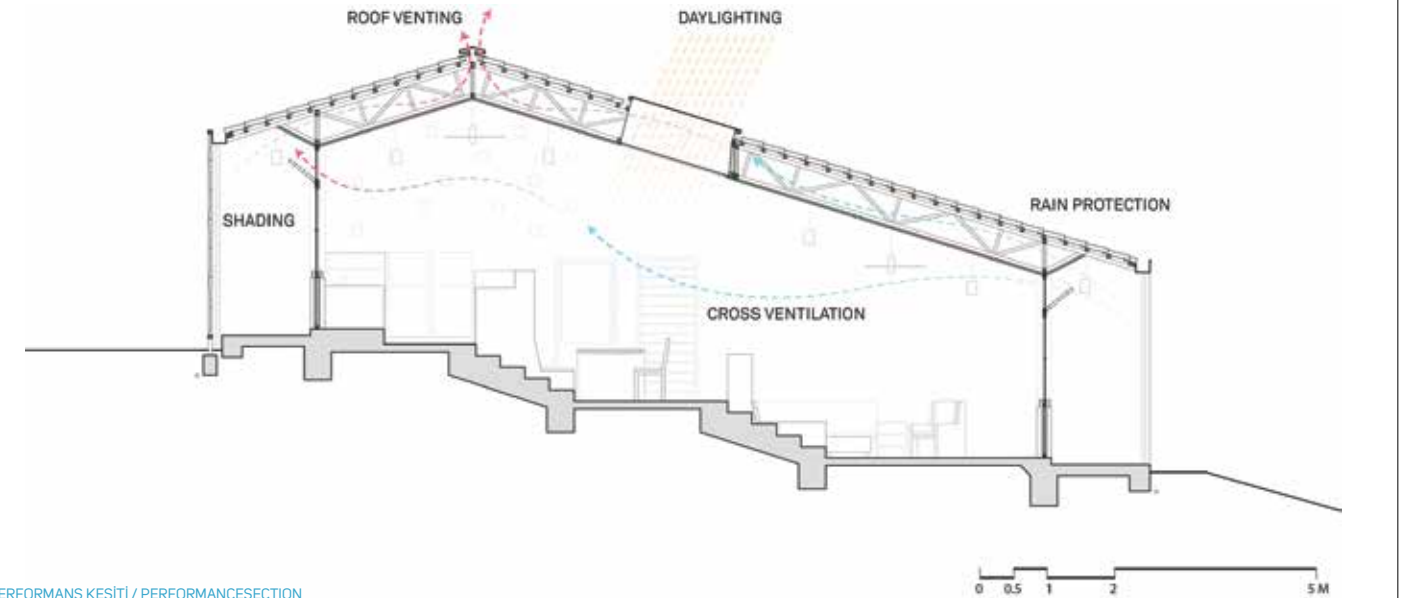
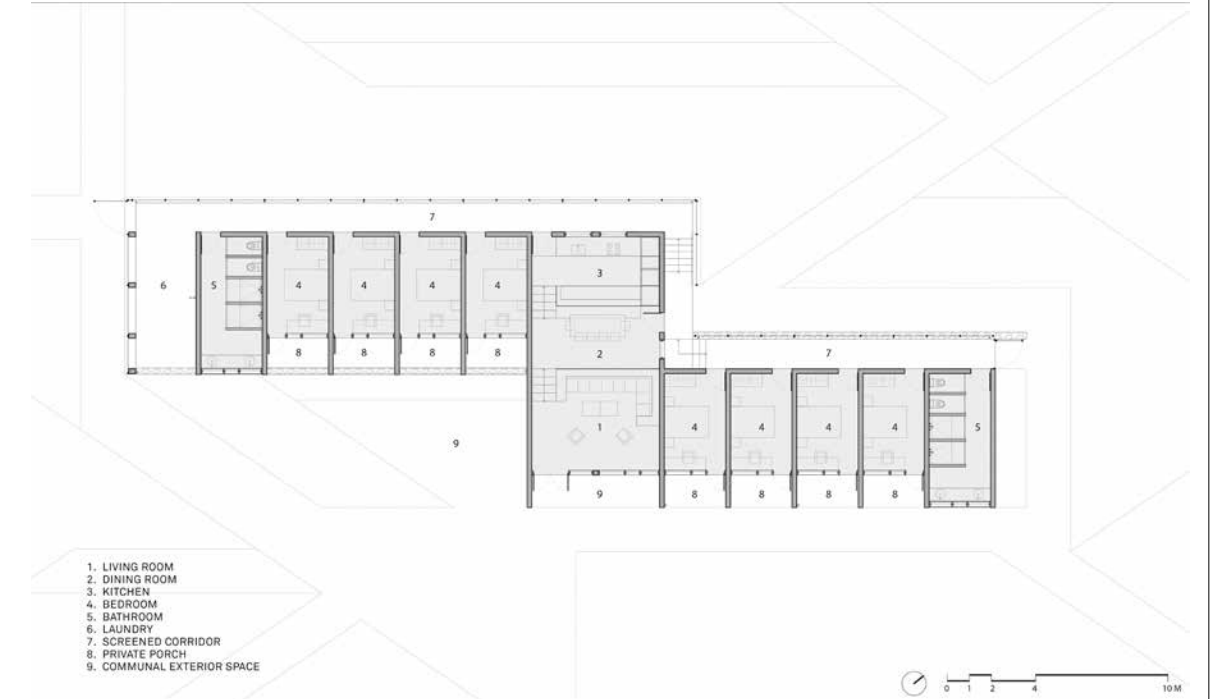
RVE Ekibi Team:
Yönetim Direktörü Managing Director:
BRIAN HALUSAN

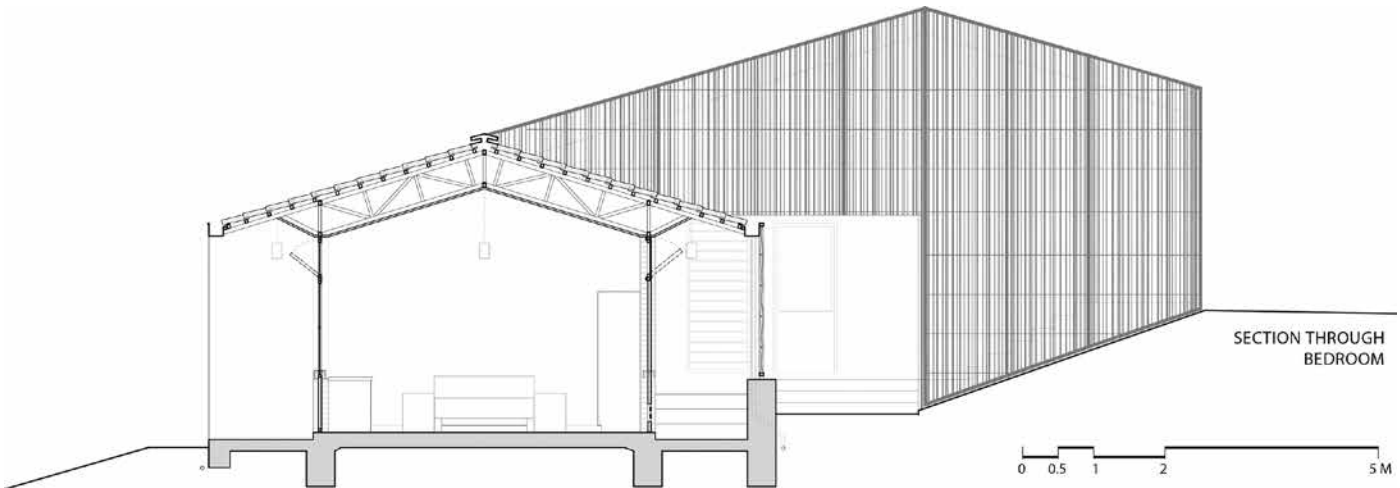
Ülke Yönetimi Country Director:
JUSTIN TWIZERE

Proje Mühendisi Project Engineer:
JAPHETH MAKALE

Yapı Mühendisi Structural Engineering:
KAYIHURA NYUNDO

Fotoğraflar Photography:
BRUCE ENGEL





YATAK ODASINDAN KESIT / SECTION THROUGH BEDROOM